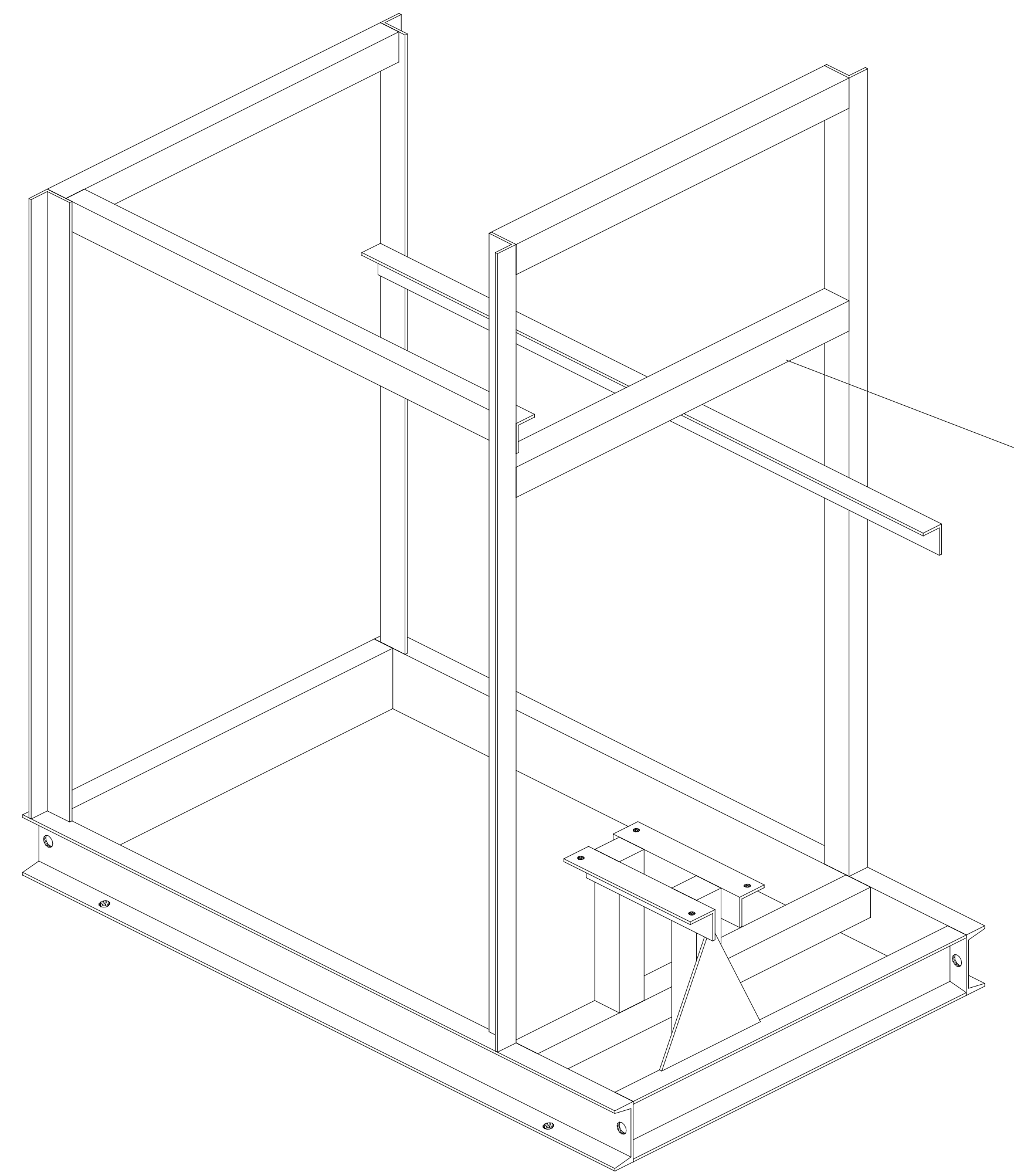
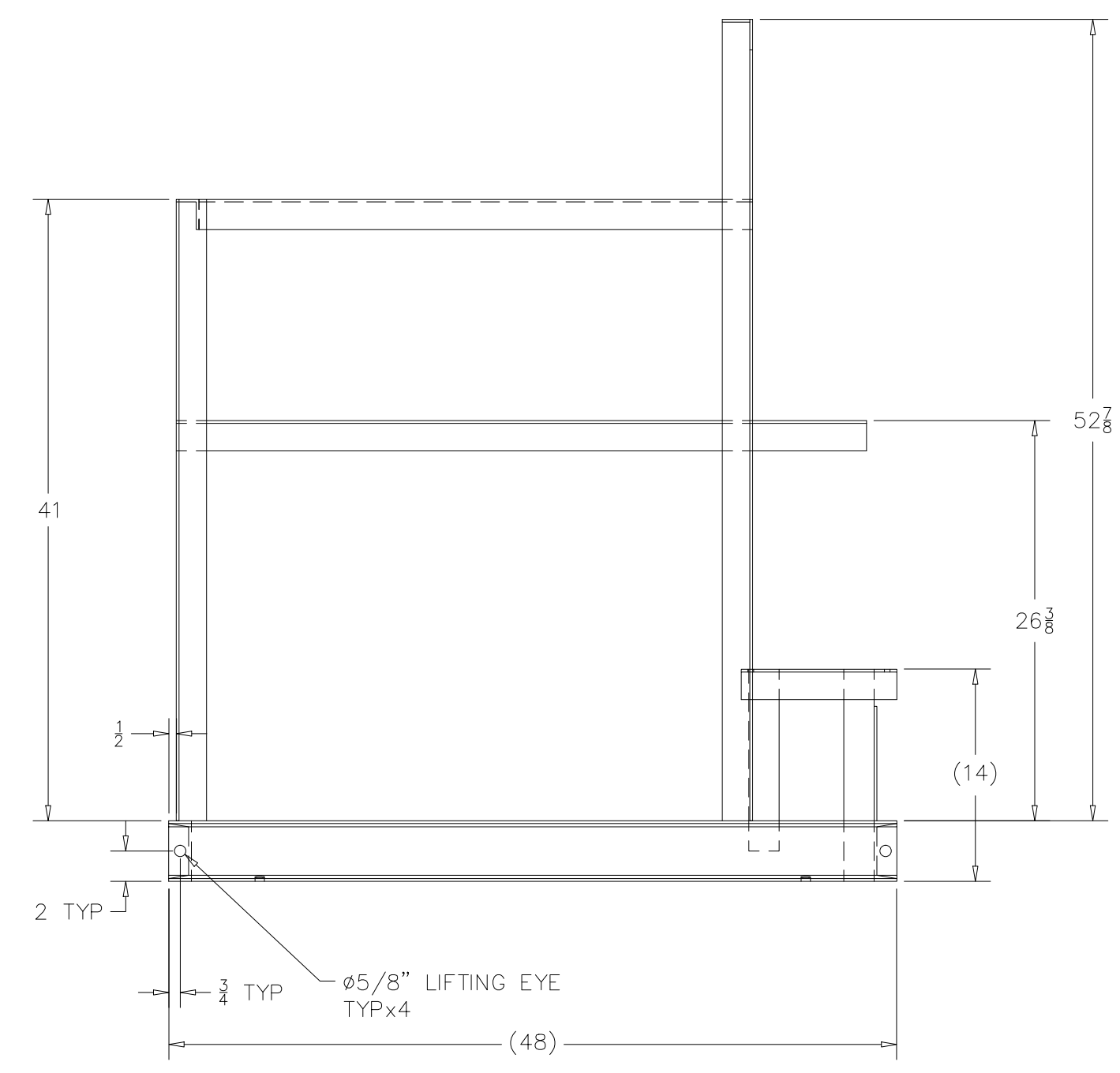
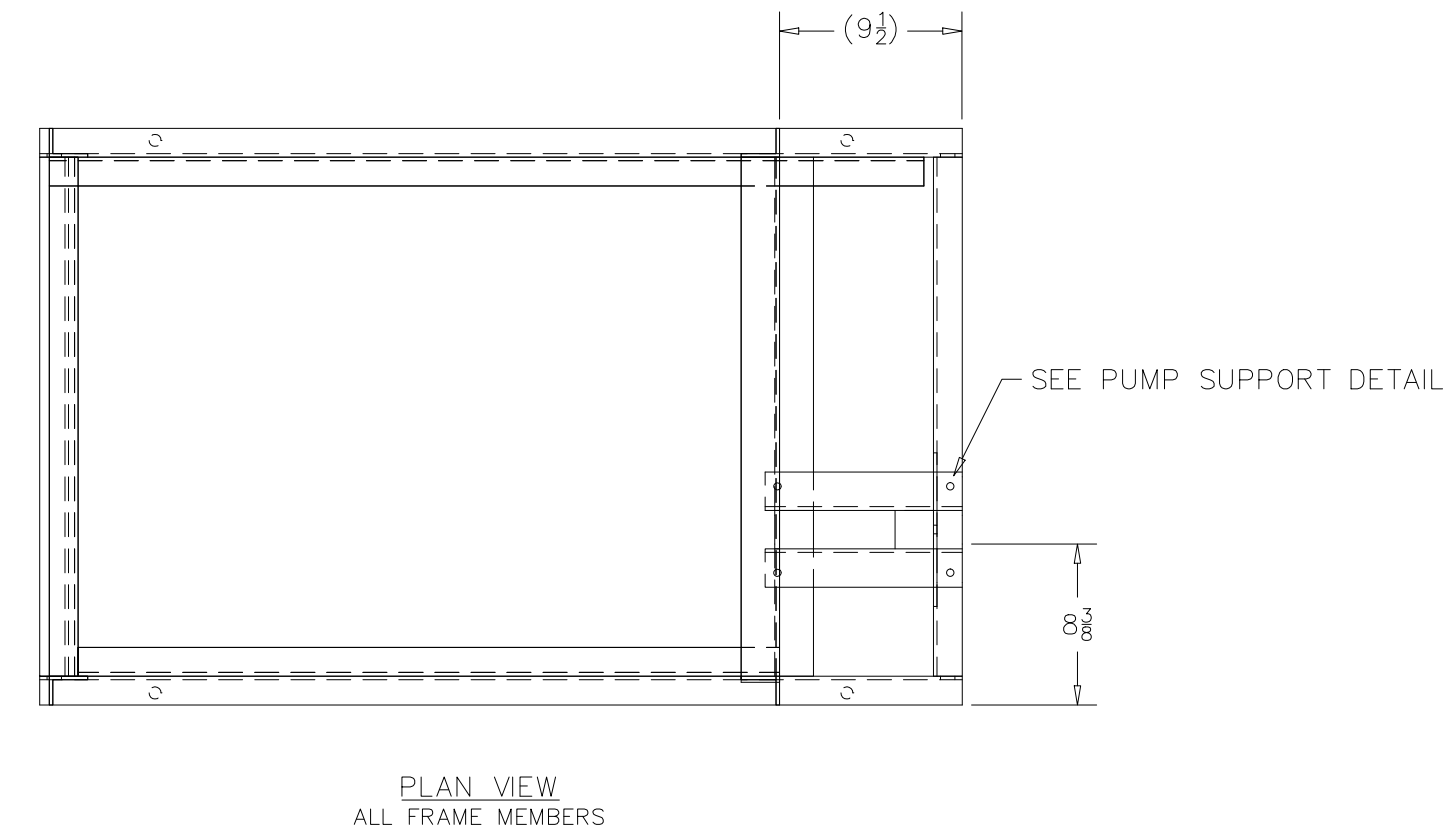
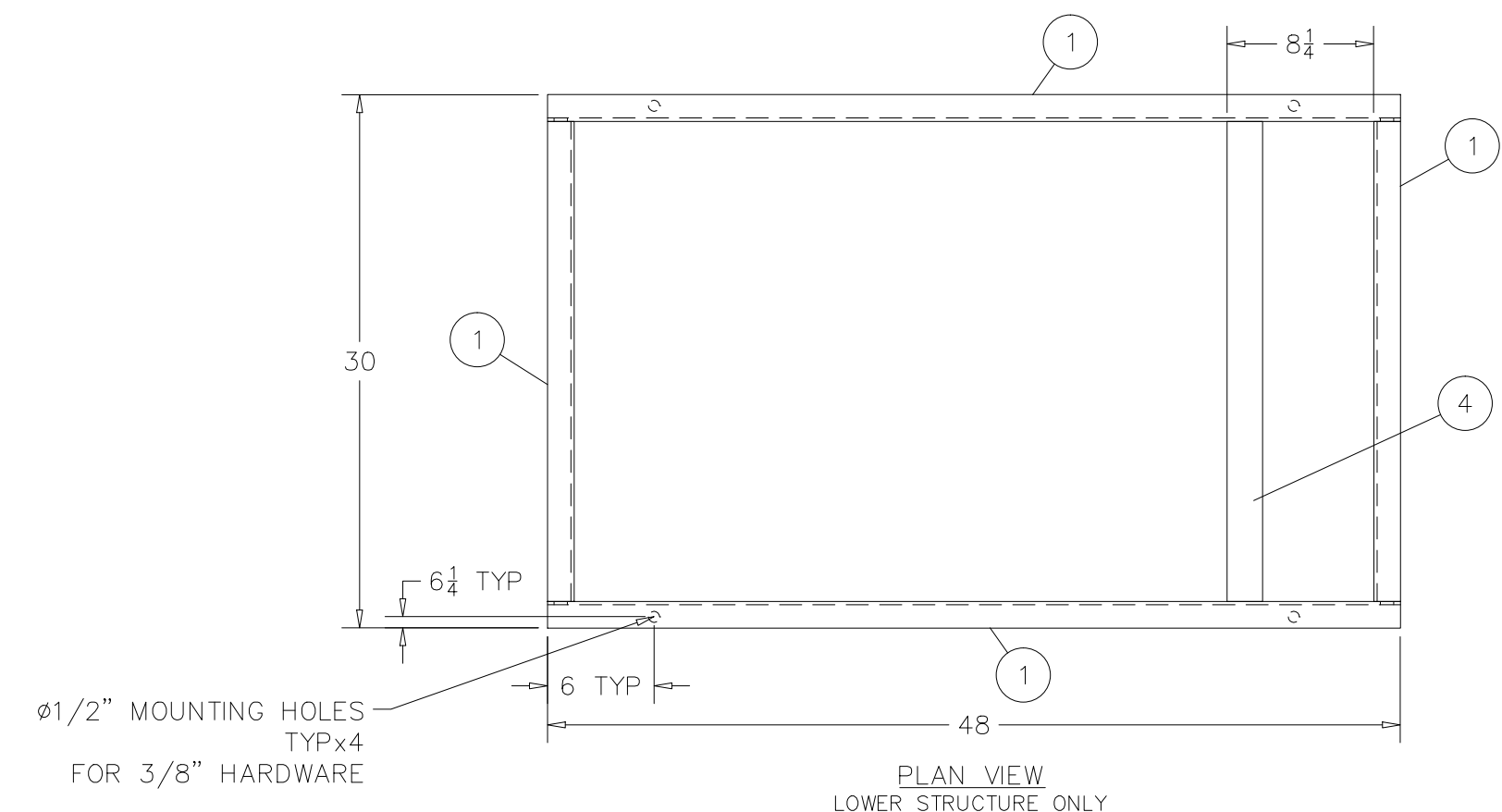
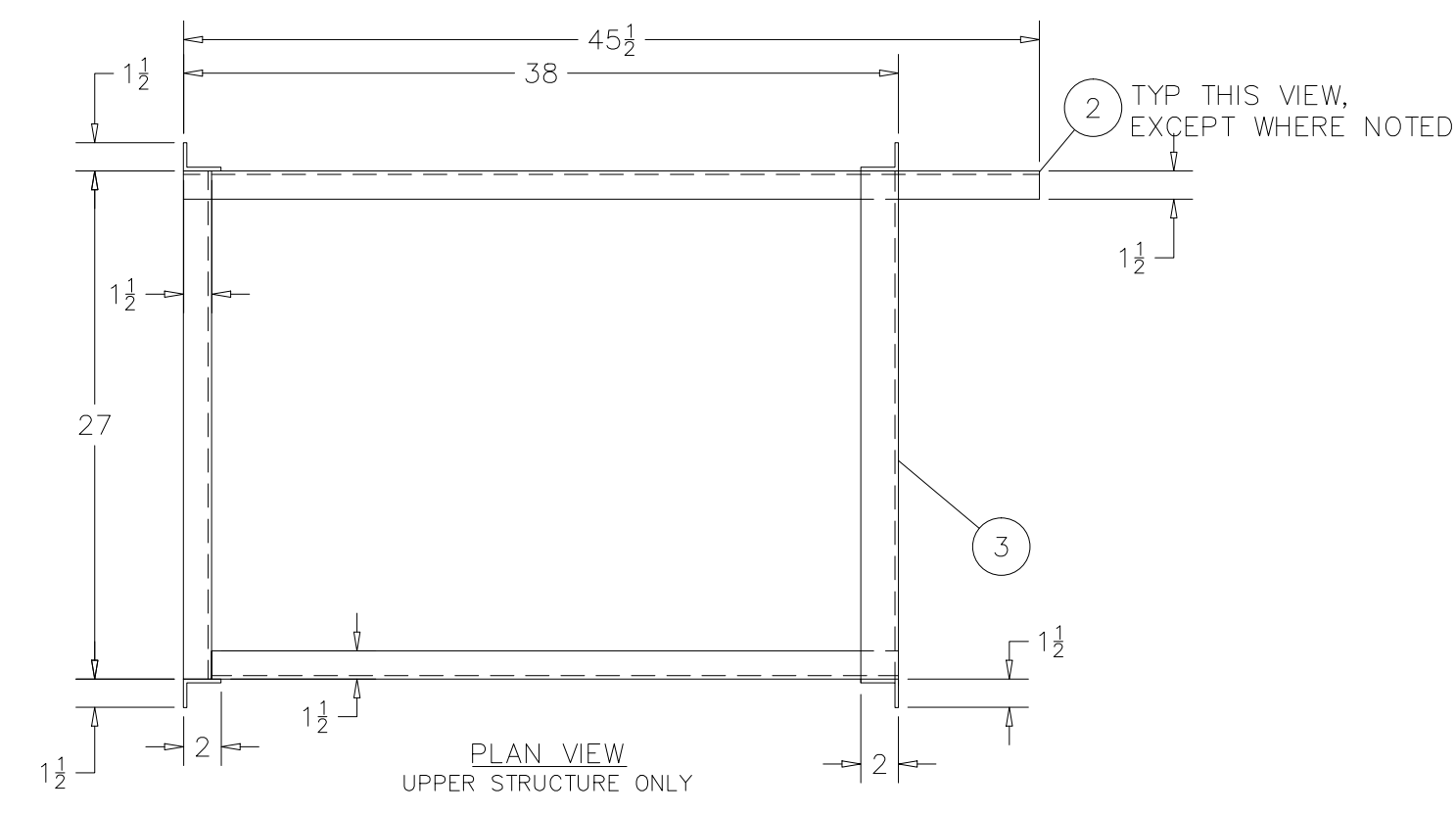
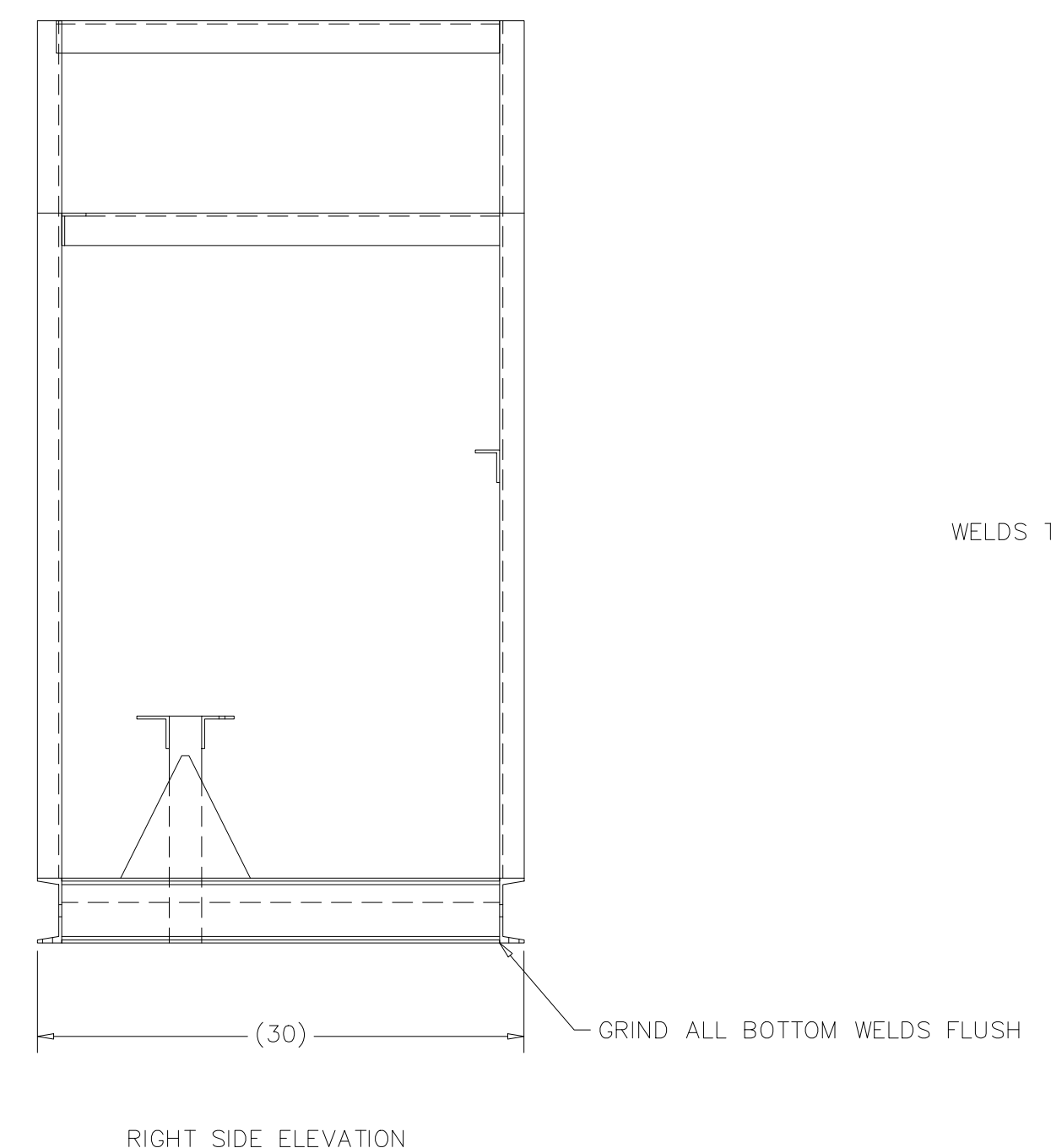
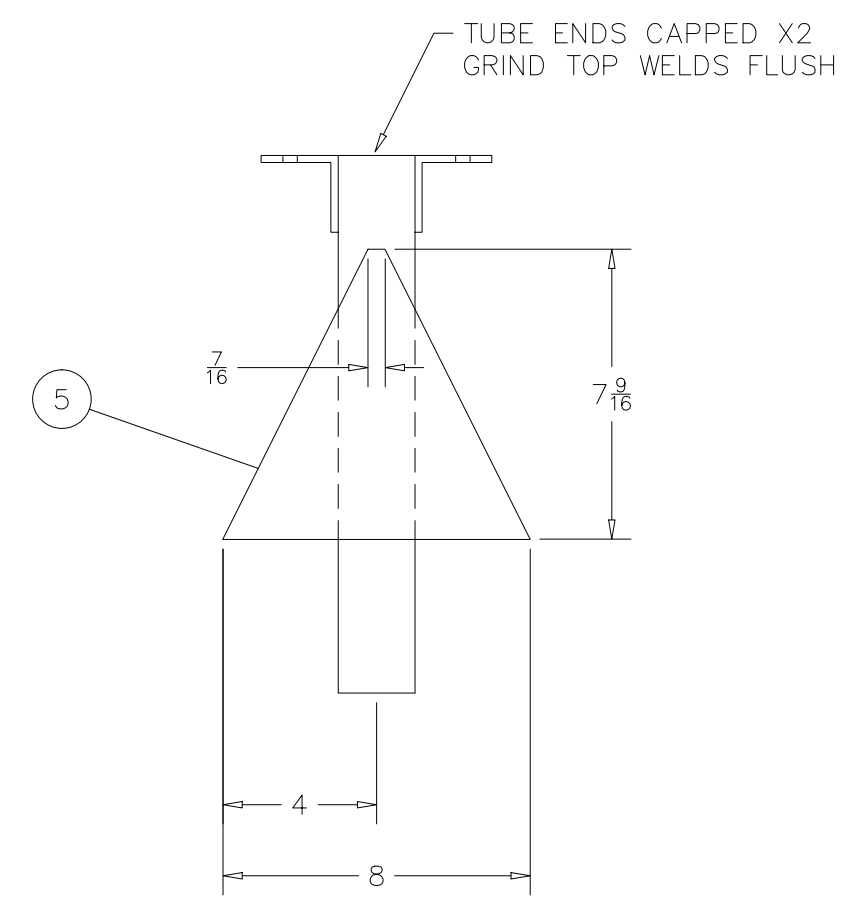
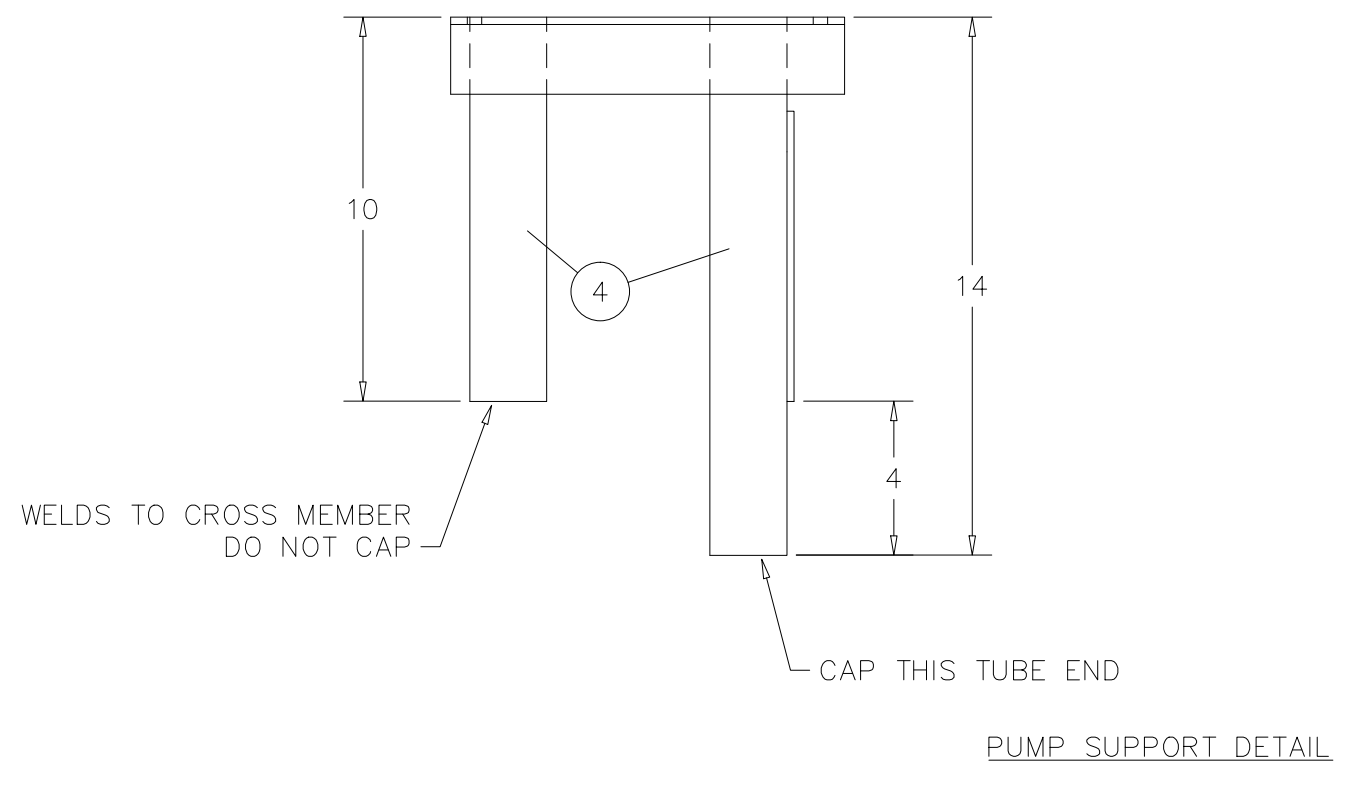
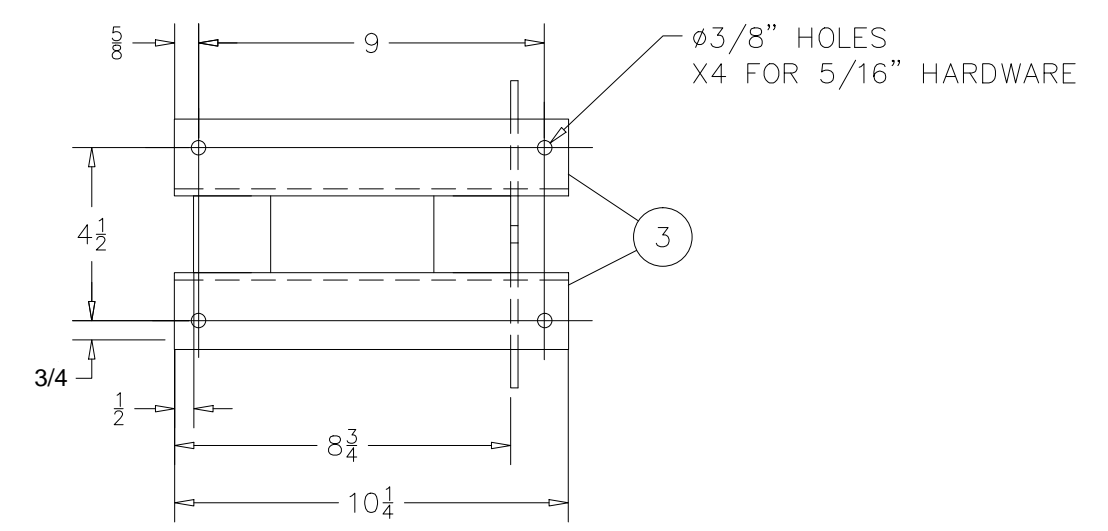
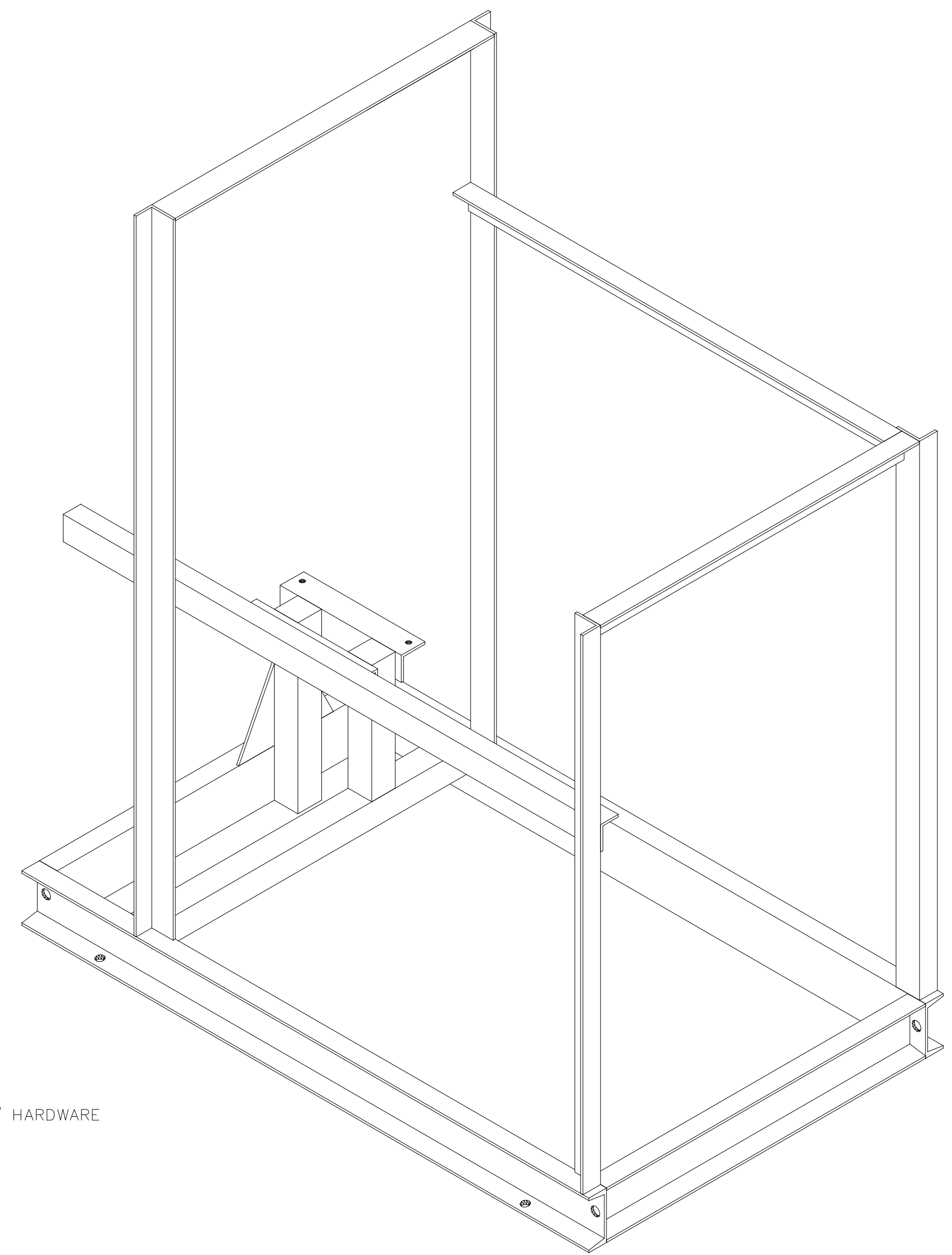


BILL OF MATERIAL

ITEM	QTY	MATL SPEC:	DESCRIPTION	NOTES
1	15ft	A36	C4x5.4 CHANNEL, CUT TO LENGTH (LOWER PERIMETER)	
2	30ft	A36	2"x1 1/2"x3/16" ANGLE, CUT TO LENGTH (UPPER STRUCTURE)	
3	6ft	A36	2"x2"x3/16" ANGLE, CUT TO LENGTH (PUMP & PANEL MOUNT)	
4	5ft	A500	2"x2"x3/16" SQ TUBE, CUT TO LENGTH (PUMP MOUNTING)	
5	1	A36	3/16" PLATE GUSSET TRIANGLE (SEE DETAIL)	



3 CUT 27" LG
DO NOT WELD UNTIL VERIFIED WITH
SUPPLIED PANEL



- NOTES:
- UNLESS OTHERWISE SPECIFIED ALL DIMENSIONS ARE IN INCHES.
 - DIMENSIONS ENCLOSED WITHIN PARENTHESES INDICATE REFERENCE.
 - DO NOT SCALE DRAWING.
 - ALL WELDS TO BE SEAL WELDED TO 1/8" CONTINUOUS FILLET.
 - GRIND ALL EDGES TO MILL EDGE RADIUS (IE, SAW CUT EDGES - GRIND SO NOT SHARP). GRIND CORNERS TO 1/4" RADIUS.
 - ALL HOLES AND SLOTS TO BE DEBURRED.
 - CAP ALL OPEN TUBE ENDS.
 - NO PAINT
 - DO NOT SCALE DRAWING.

REV	DESCRIPTION	DATE	BY	CHK'D	DATE	BY	CHK'D
0	RELEASED FOR APPROVAL	07DEC11	?				