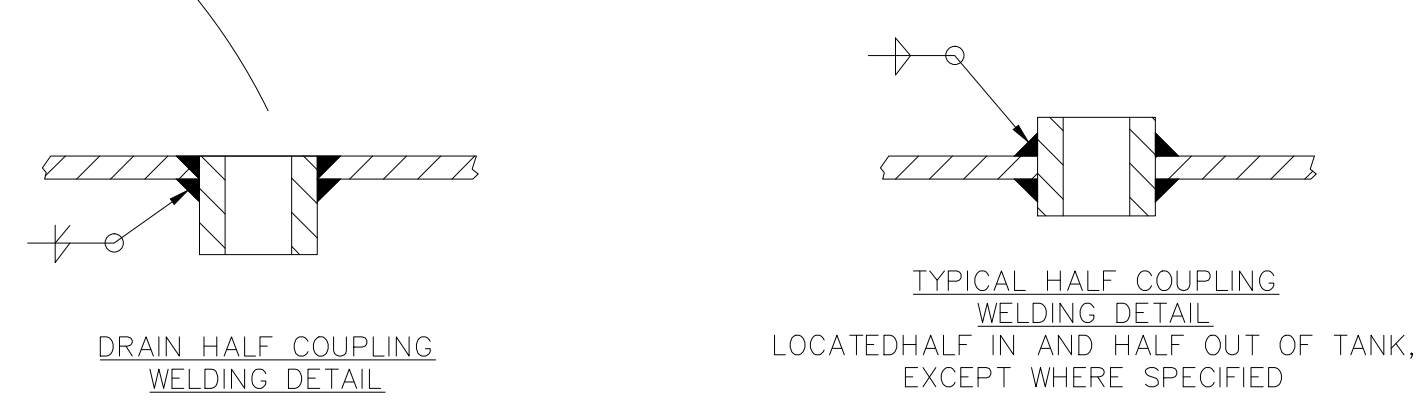
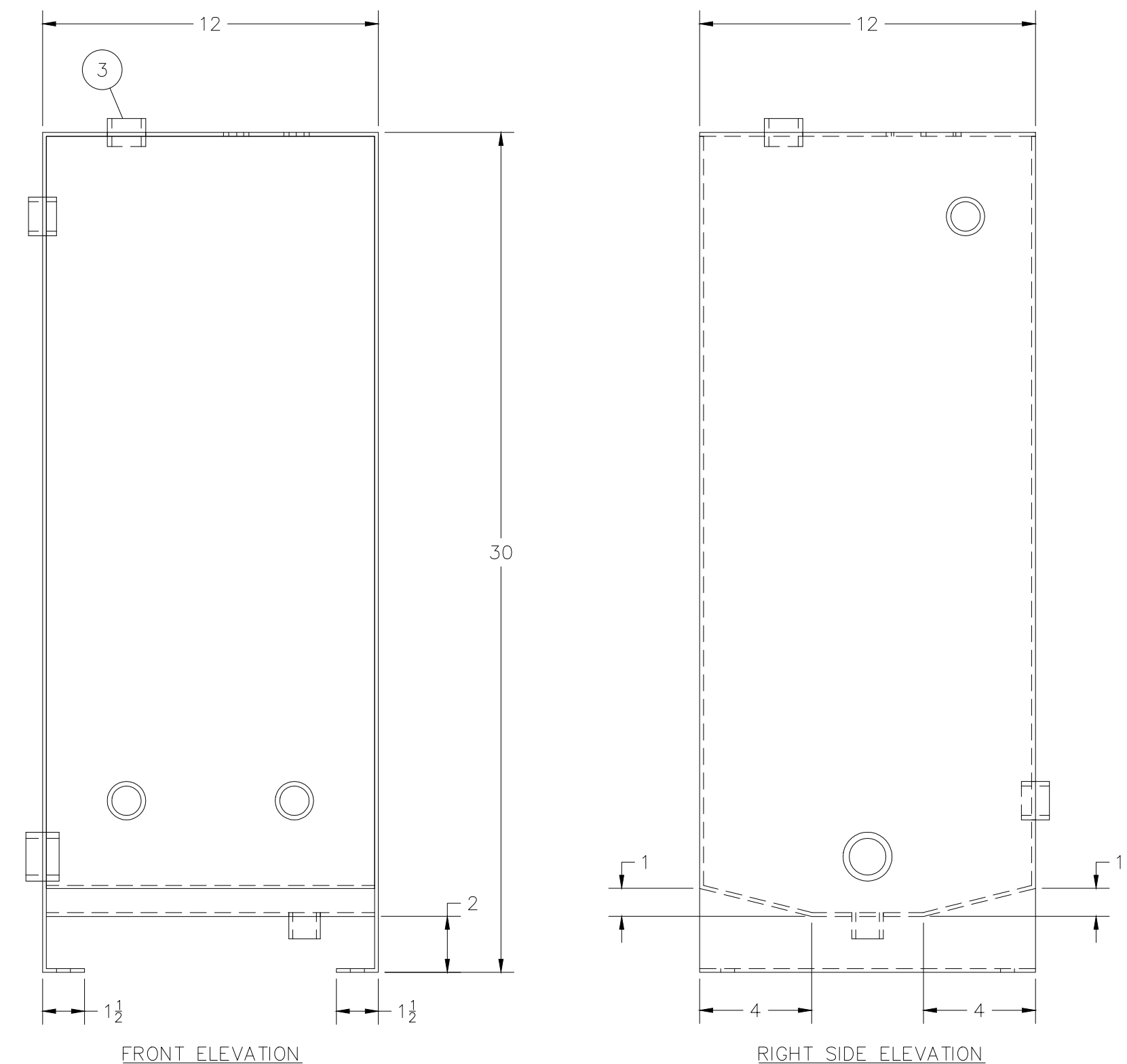
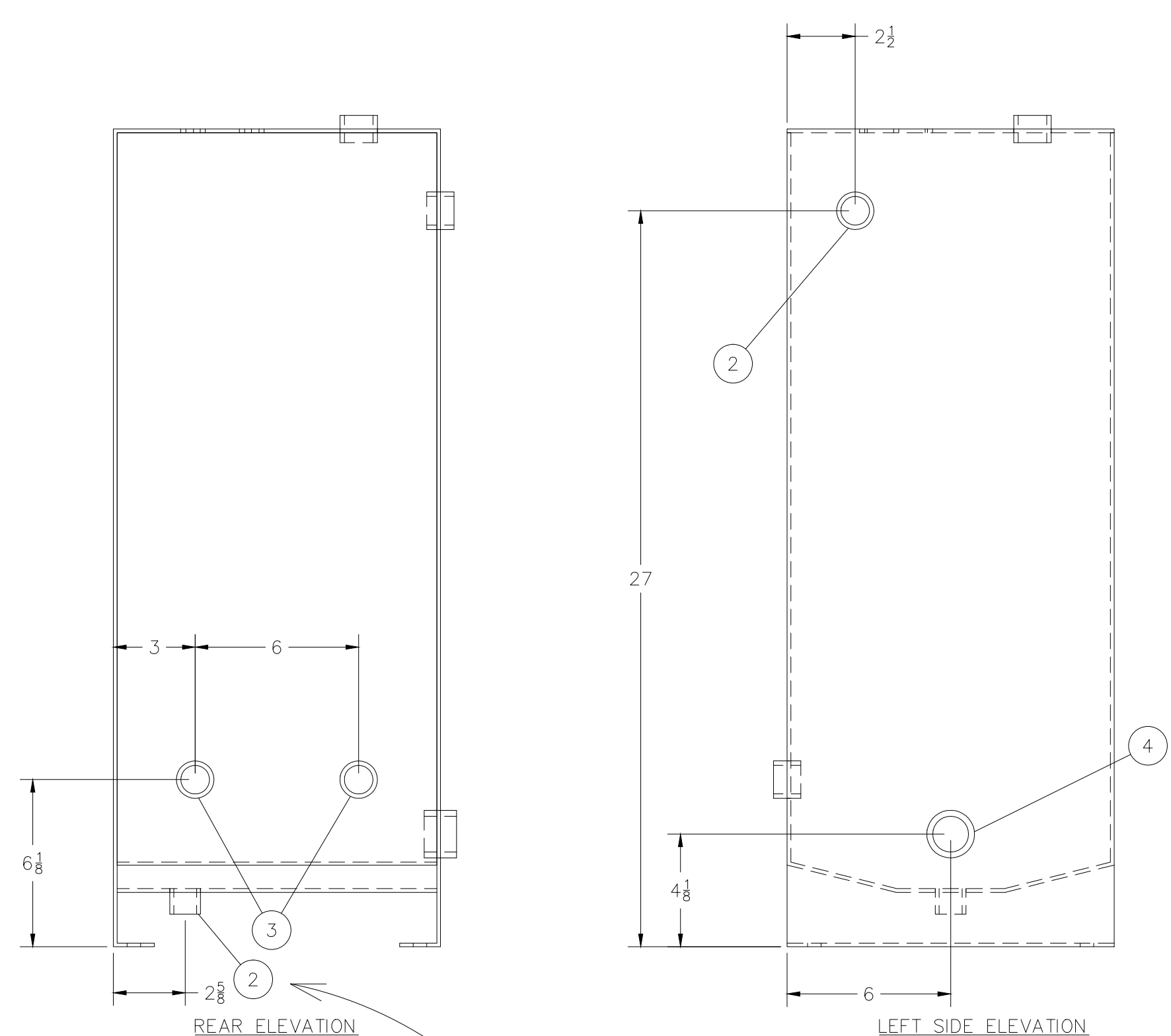
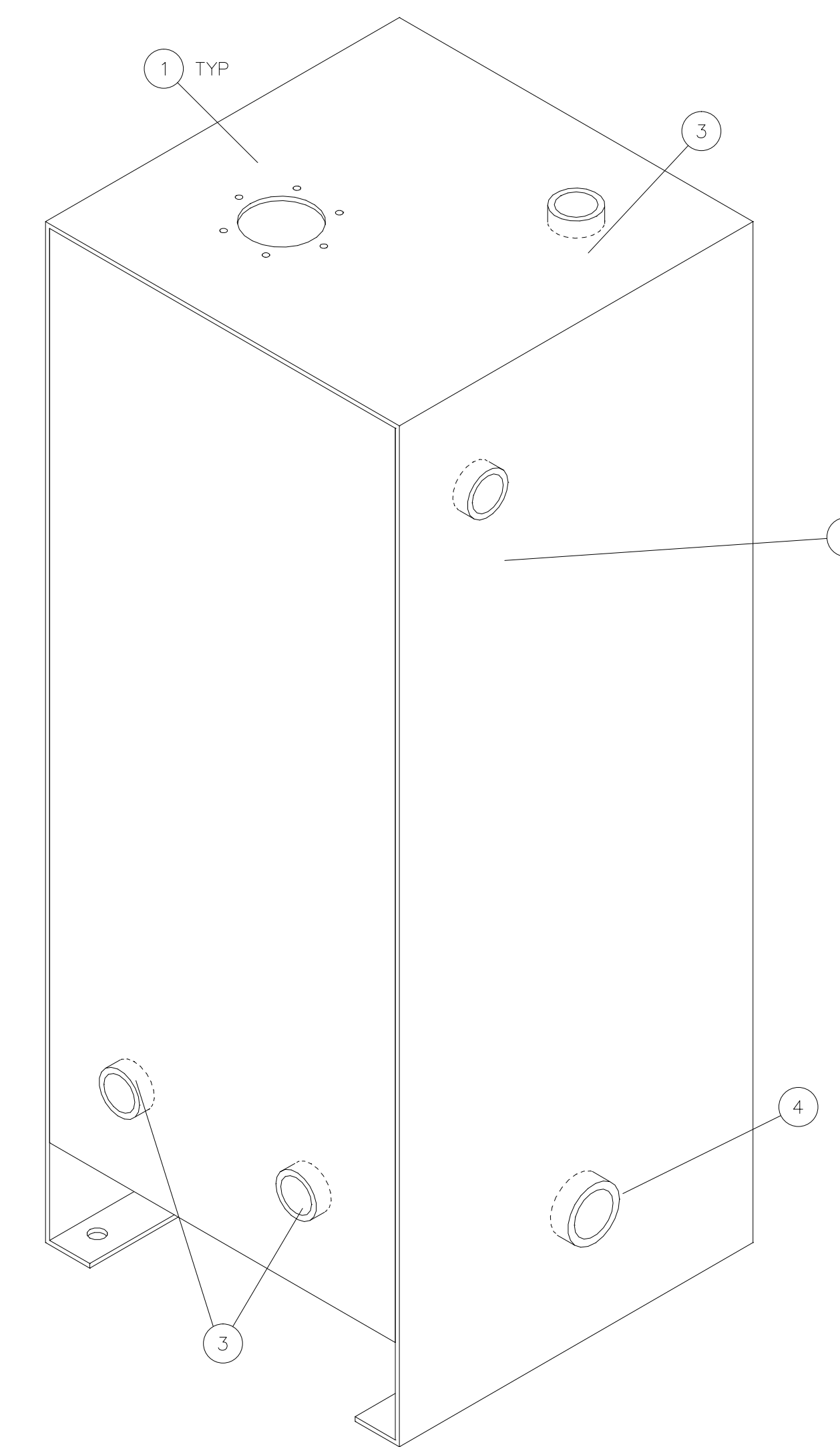
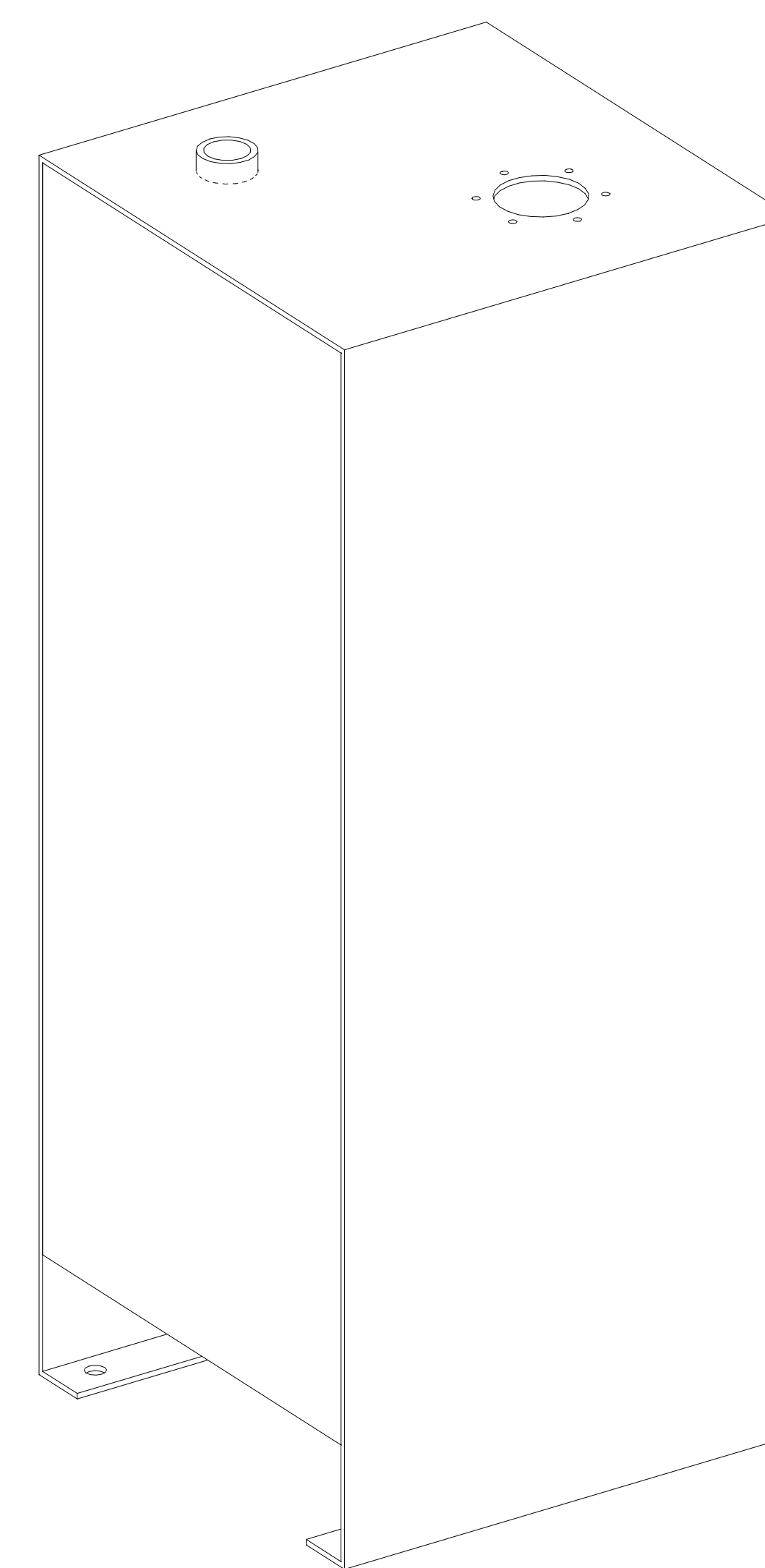
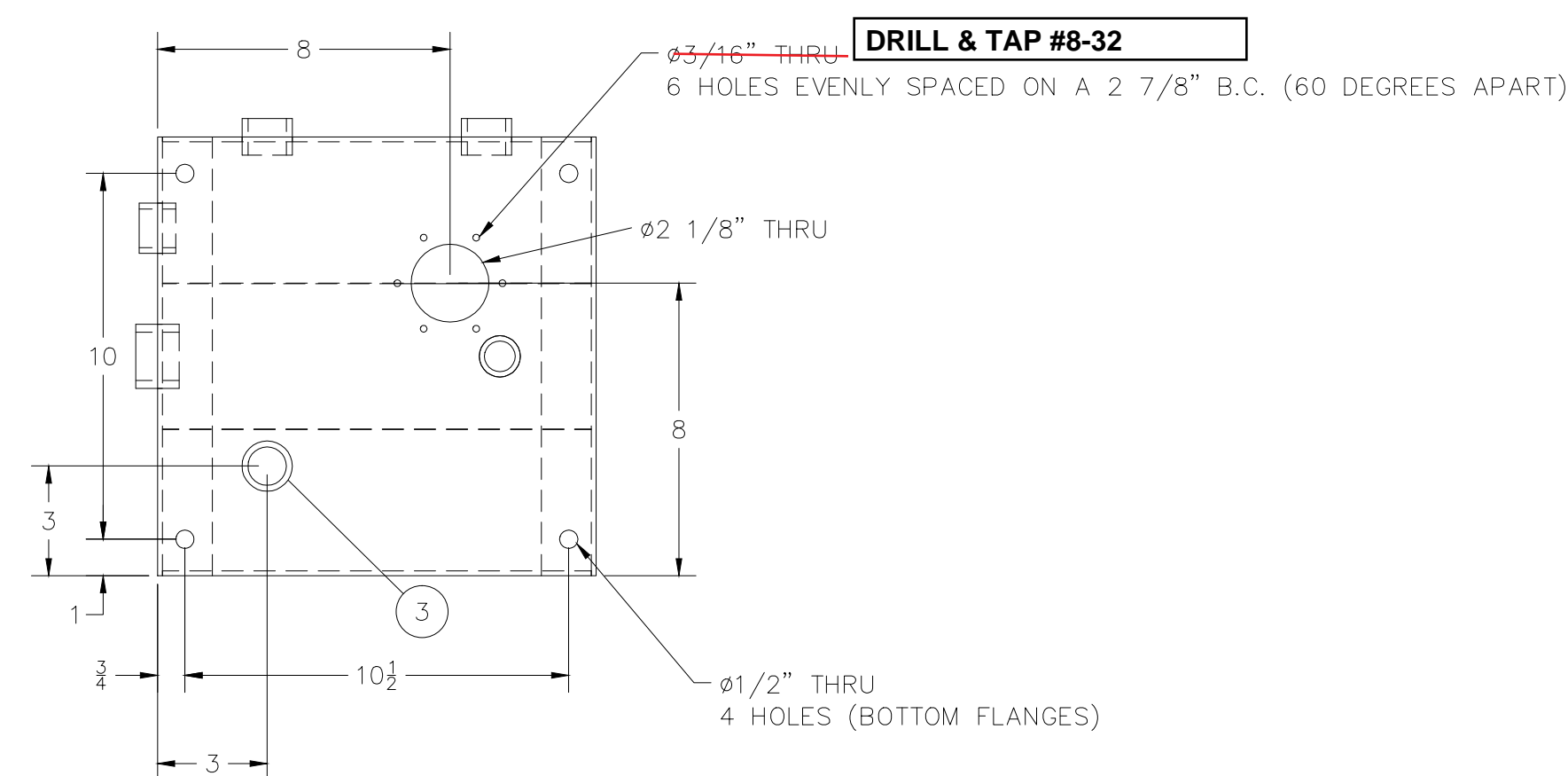


BILL OF MATERIAL

ITEM	QTY	MATL SPEC:	DESCRIPTION	NOTES
1	15sqft	304SS	10 GA SHEET, 2B/2B	
2	2	304SS	1/2" 3000# HALF COUPLING, THD	
3	3	304SS	3/4" 3000# HALF COUPLING, THD	
4	1	304SS	1" 3000# HALF COUPLING, THD	



- NOTES:
- UNLESS OTHERWISE SPECIFIED ALL DIMENSIONS ARE IN INCHES.
 - DIMENSIONS ENCLOSED WITHIN PARENTHESES INDICATE REFERENCE.
 - DO NOT SCALE DRAWING.
 - ALL WELDS TO BE SEAL WELDED TO 1/8" CONTINUOUS FILLET. PURGE WITH ARGON INSIDE 100% OF WELD PASSES
 - GRIND ALL EDGES TO MILL EDGE RADIUS (IE, SAW CUT EDGES - GRIND SO NOT SHARP). GRIND CORNERS TO 1/4" RADIUS.
 - ALL HOLES AND SLOTS TO BE DEBURRED.
 - DO NOT SCALE DRAWING.

TOLERANCES ON DIMENSIONS ARE AS FOLLOWS EXCEPT FOR BASIC DIMENSIONS, MAT'L STOCK SIZES AND TOLERANCES SPECIFIED OTHERWISE.				SUPERIOR INDUSTRIAL EQUIPMENT COMPANY	
ONE DECIMAL				PLAN 53 SEAL COOLER SKID TANK ASSEMBLY	
TWO DECIMALS				DATE: 06FEB13	
THREE DECIMALS				REV: 1	
ANGULAR DIMENSIONS				DRAWN BY: KB	
CAST DIMENSIONS				CHECKED BY: SV	
MATERIAL STOCK SIZE TOLERANCES SHALL CONFORM TO APPLICABLE STANDARD MILL VALUES UNLESS COVERED WITHIN A SPECIFIED MATERIAL SPECIFICATION				C13022-301	
GEOMETRIC SYMBOLOLOGY PER ANSI Y14.5				A	