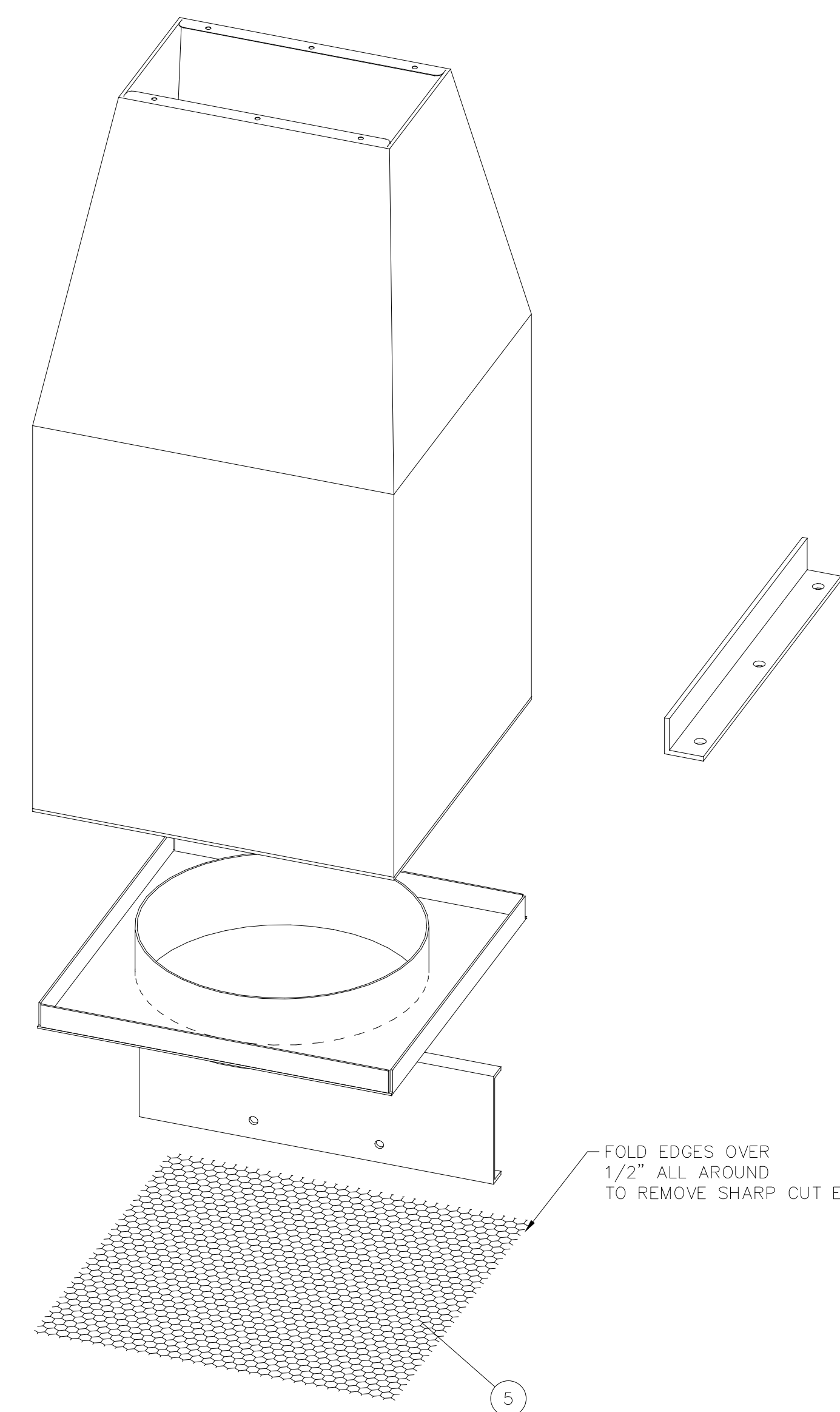
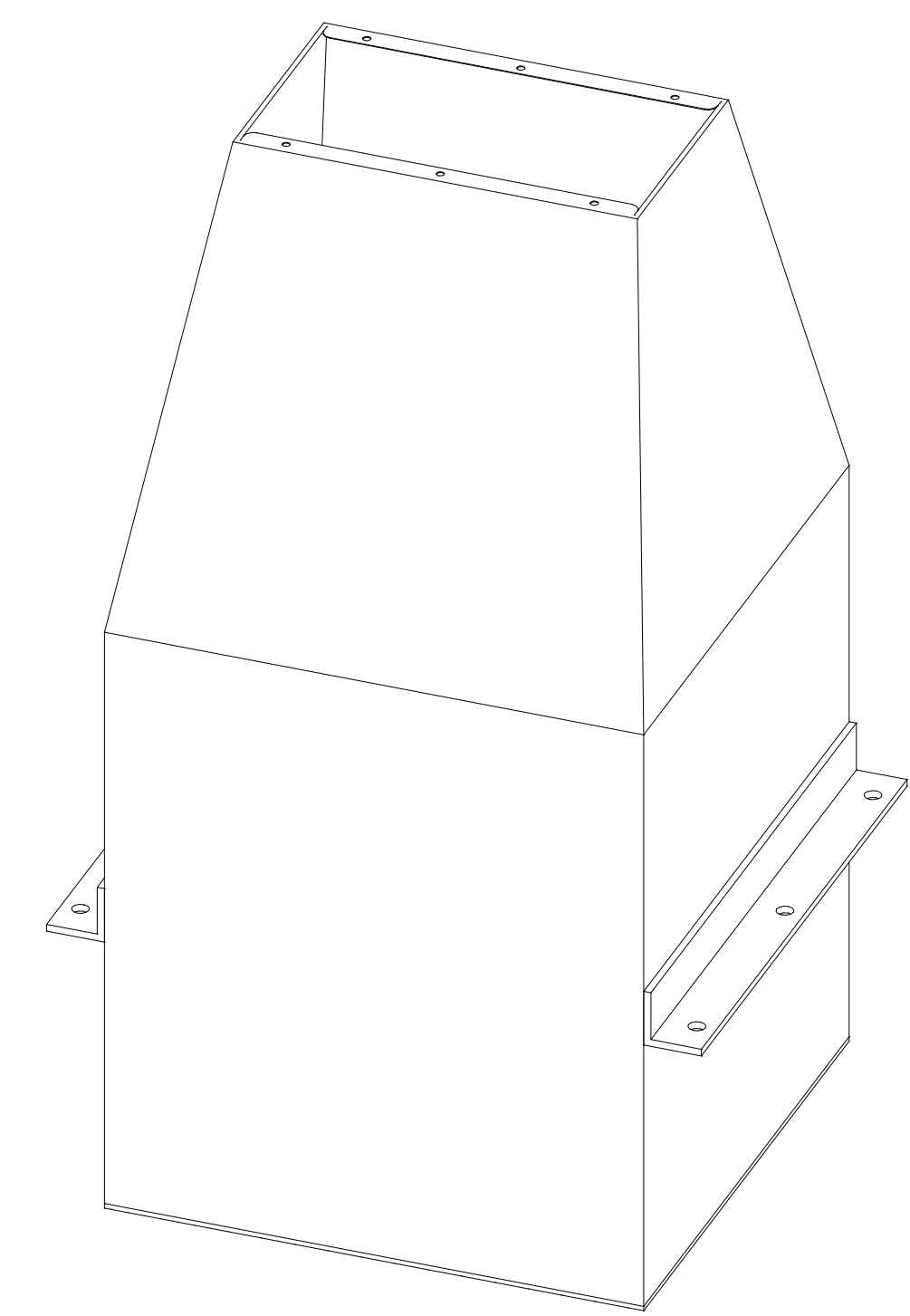
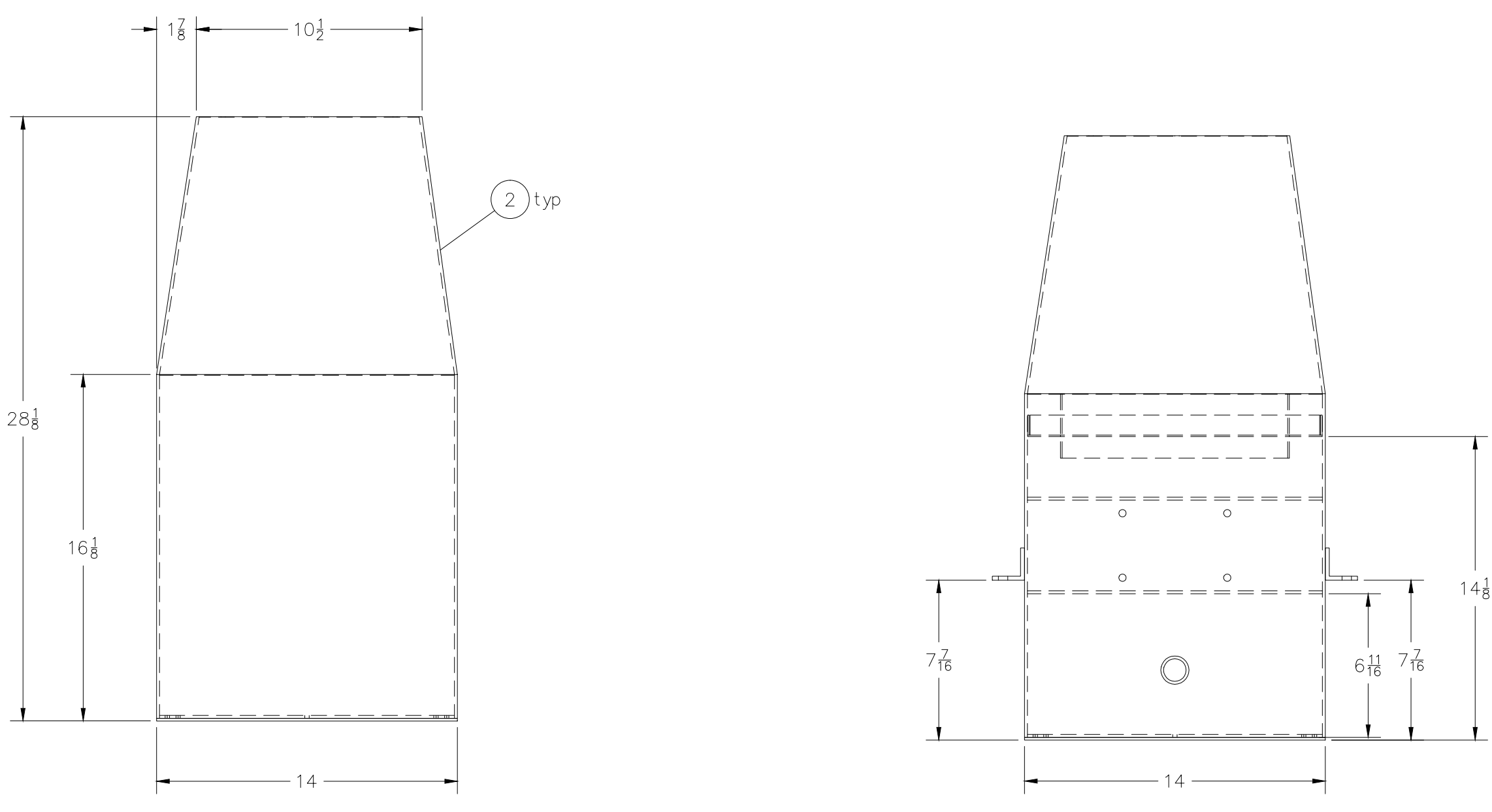
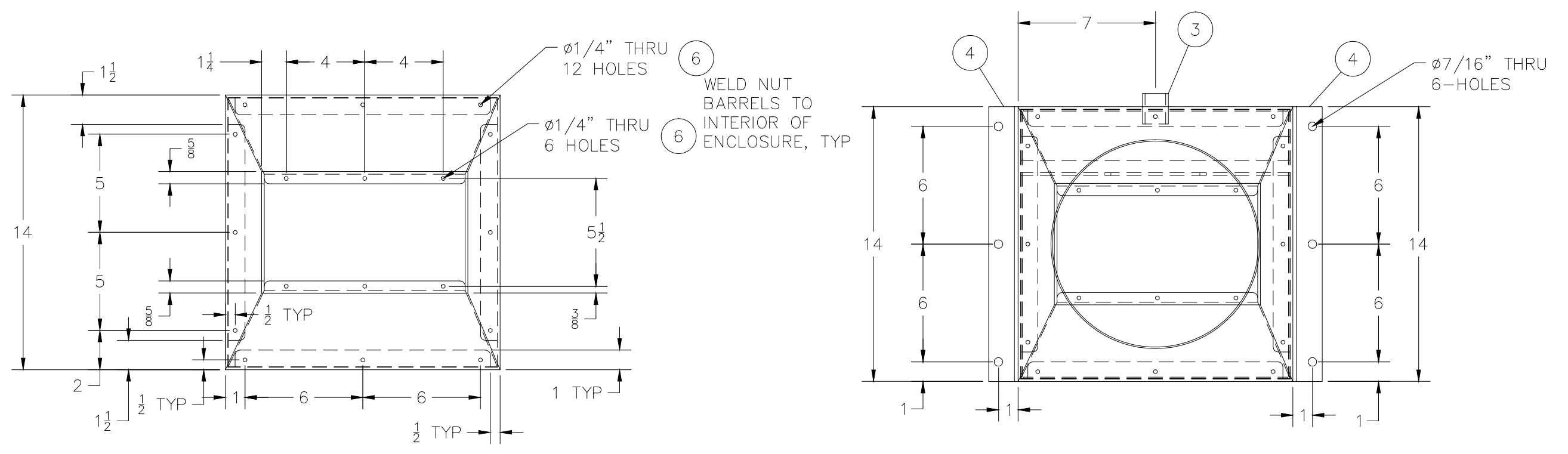
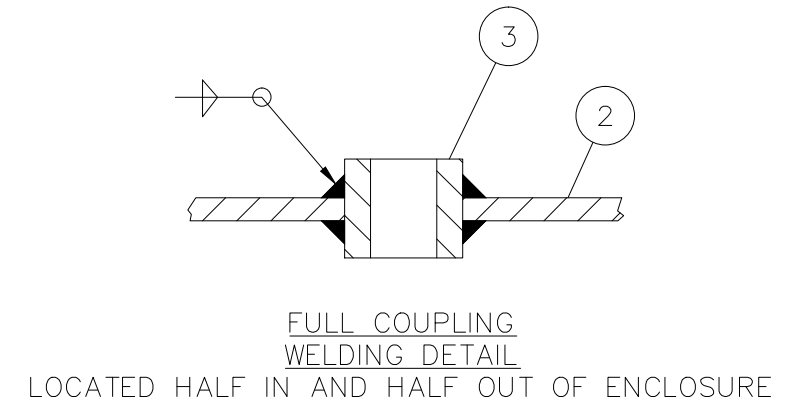
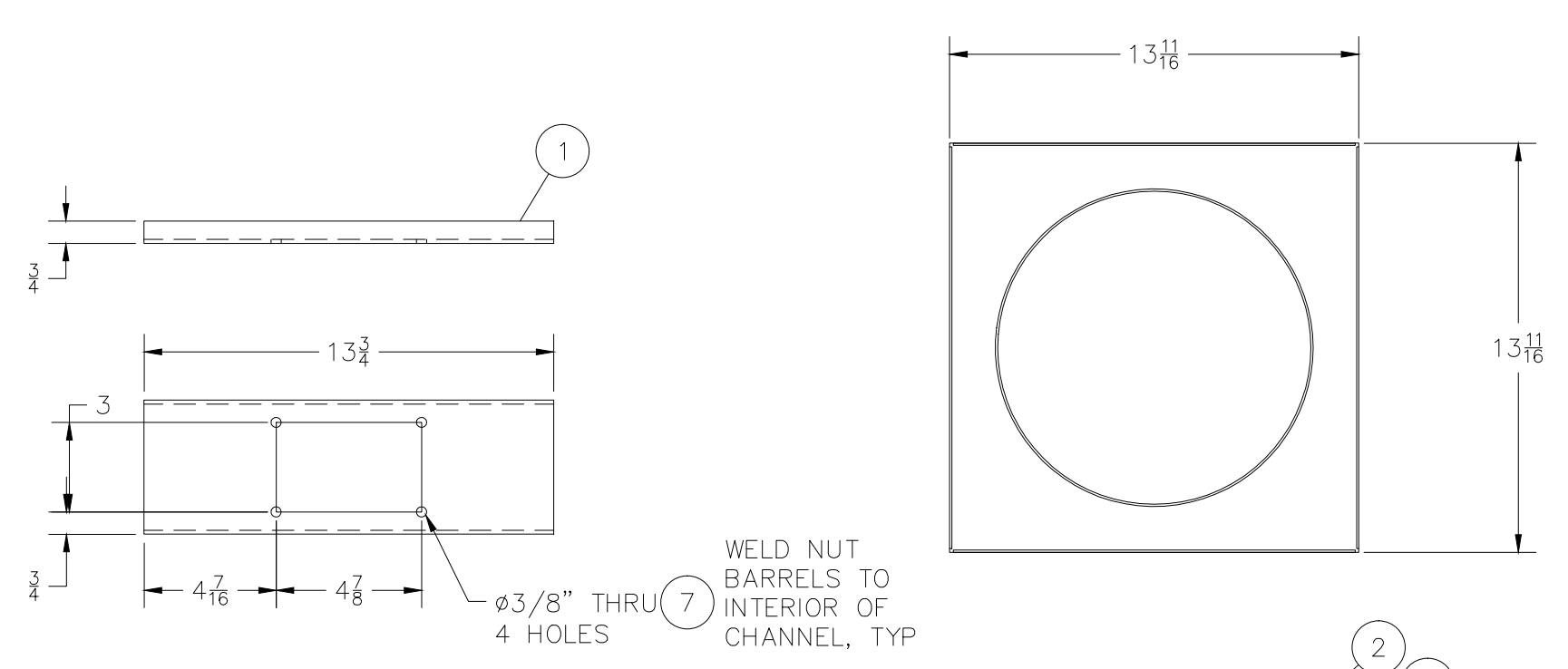


**BILL OF MATERIAL**

ITEM	QTY	MATL SPEC.	DESCRIPTION	NOTES
1	15sqft	CS	10 GA , 2B/2B, MOTOR MOUNT	
2	2	CS	16 GAUGE, FAN SHROUD & MAIN ENCLOSURE	
3	1	A105 CS	3/4" 3000# FULL COUPLING, THD	
4	3ft	CS	1"x1"x1/8" ANGLE, CUT TO LENGTH	
5	1	CS	EXPANDED METAL MESH GRATE-BOLT ON	
6	10	CS	8-32 WELD NUT, McMASTER CARR #90596A009	
7	4	CS	1/4" WELD NUT, McMASTER CARR #90596A300	



- NOTES:**
- UNLESS OTHERWISE SPECIFIED ALL DIMENSIONS ARE IN INCHES.
  - DIMENSIONS ENCLOSED WITHIN PARENTHESES INDICATE REFERENCE.
  - DO NOT SCALE DRAWING.
  - SEAL WELD IF POSSIBLE, STITCH WELD IF NEEDED. 1/8" CONTINUOUS FILLET. PURGE WITH ARGON INSIDE 100% OF WELD PASSES
  - GRIND ALL EDGES TO MILL EDGE RADIUS (IE, SAW CUT EDGES - GRIND SO NOT SHARP). GRIND CORNERS TO 1/4" RADIUS.
  - ALL HOLES AND SLOTS TO BE DEBURRED.
  - DO NOT SCALE DRAWING.

REV	DESCRIPTION	DATE	BY	CHK'D	DATE	BY	CHK'D
A	RELEASED FOR FABRICATION	08FEB13	SV	KB	06FEB13	1	1
O	RELEASED FOR QUOTES	06FEB13	SV	KB			

TOLERANCES ON DIMENSIONS ARE AS FOLLOWS EXCEPT FOR BASIC DIMENSIONS, MAT'L STOCK SIZES AND TOLERANCES SPECIFIED OTHERWISE.

ONE DECIMAL \_\_\_\_\_  
TWO DECIMALS \_\_\_\_\_  
THREE DECIMALS \_\_\_\_\_  
ANGULAR DIMENSIONS \_\_\_\_\_  
CAST DIMENSIONS \_\_\_\_\_

MATERIAL STOCK SIZE TOLERANCES SHALL CONFORM TO APPLICABLE STANDARD MILL VALUES UNLESS COVERED WITHIN A SPECIFIED MATERIAL SPECIFICATION GEOMETRIC SYMBOLOLOGY PER ANSI Y14.5

SUPERIOR INDUSTRIAL EQUIPMENT COMPANY  
**PLAN 53 SEAL COOLER SKID FAN ENCLOSURE ASSEMBLY**

C13022-402