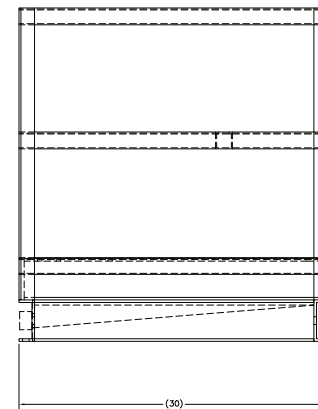
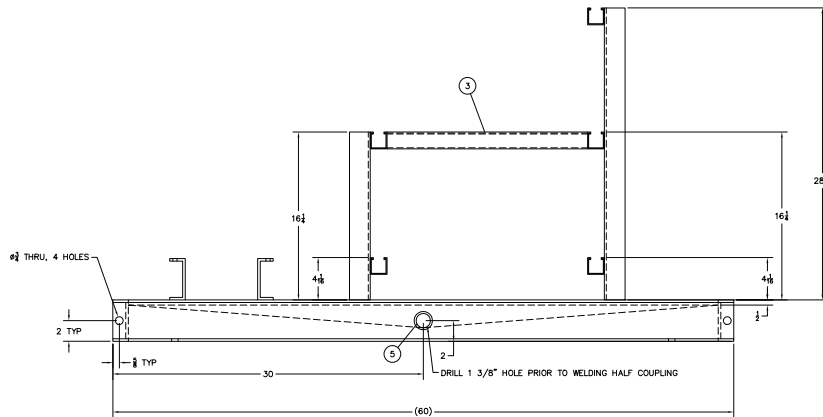
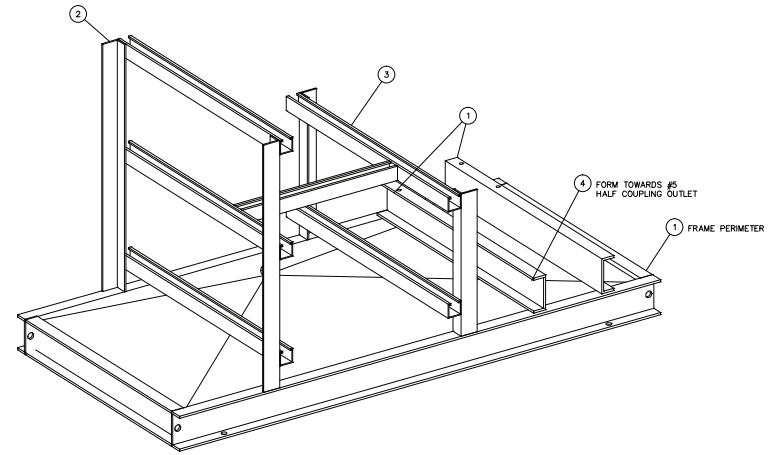
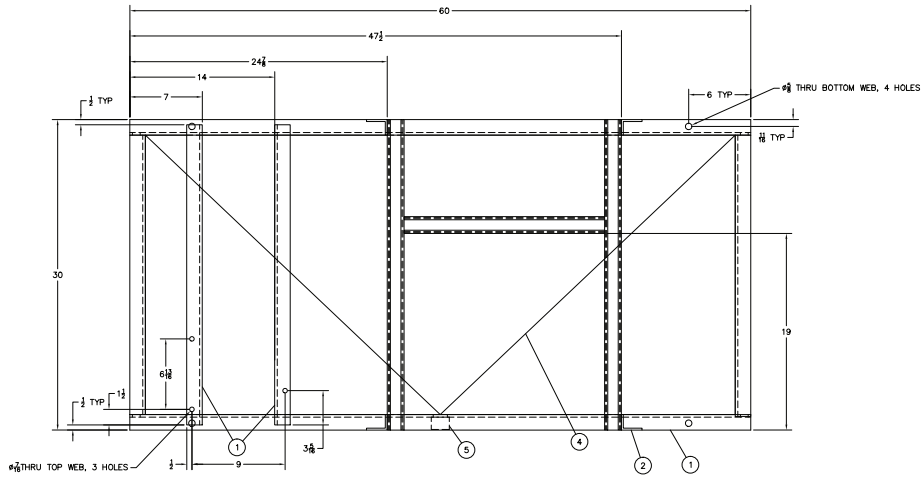


ITEM QTY		MATL SPEC	DESCRIPTION	NOTES
1	20in	A36	C4x5.4 CHANNEL, CUT TO LENGTH (LOWER PERIMETER)	
2	10in	A36	2"x1 1/2"x3/16" ANGLE, CUT TO LENGTH (SUPPORT STRUCTURE)	
3	20in	304SS	PH304 UNISTRUT (1 5/8"x1 5/8", CUT TO LENGTH (SUPPORTS))	
4	1 pc	A36	3/16" PLATE, 48" LONG, CUT TO SIZE (DRIP TRAY)	
5	1 pc	SA105N	1" 3000# THREADED HALF COUPLING	



- NOTES:**
- UNLESS OTHERWISE SPECIFIED ALL DIMENSIONS ARE IN INCHES.
  - DIMENSIONS ENCLOSED WITHIN PARENTHESES INDICATE REFERENCE.
  - DO NOT SCALE DRAWING.
  - ALL WELDS TO BE SEAL WELDED TO 1/8" CONTINUOUS FILLET.
  - GRIND ALL EDGES TO MILL EDGE RADIUS (E.G. SAW CUT EDGES - GRIND SO NOT SHARP). GRIND CORNERS TO 1/4" RADIUS.
  - ALL HOLES AND SLOTS TO BE DEBURRED.
  - ALL FRAME MATERIAL EXCEPT UNISTRUT A-36 CARBON STEEL WITH EPOXY COATING, COLOR BLUE. MASK OFF UNISTRUT PRIOR TO COATING.

DO NOT SCALE DRAWING!

SUPERIOR INDUSTRIAL EQUIPMENT COMPANY			CLASSIC BIRD BRAND FRAME ASSEMBLY		
UNLESS OTHERWISE SPECIFIED ALL DIMENSIONS ARE IN INCHES. TYPICAL TOLERANCES: DIMENSIONS TO NEAREST 1/16" UNLESS OTHERWISE SPECIFIED.					
THE CUSTOMER'S MATERIAL SPECIFICATIONS SHALL TAKE PRECEDENCE OVER THE SUPPLIER'S SPECIFICATIONS UNLESS OTHERWISE SPECIFIED.					
1	UPDATED FOR CUSTOMER COMMENTS	10/06/14	SY	KB	
0	RELEASED FOR FABRICATION	10/06/14	SY	KB	
DESCRIPTION		DATE	BY	CHK'D	
					10/06/14
					1